



Certificate of Analysis

Product Description

Product Name	Lenti-SV40T Lentivirus
Cat Number	G256
Lot Number	KH8055
Quantity	1 x 10ml
Viral Titer	4.47 x 10 ⁶ IU/ml
QC Evaluation Cell Line	293T Cells (Cat no. LV010)

Specifications

	Test Method	Minimum	Results
Viral Titer	qRT-PCR	1.0 x 10 ⁶ IU/ml	4.47 x 10 ⁶ IU/ml
Sterility Test	Direct Culture	***	Not detected

This product is for research use only and is not intended for therapeutic or diagnostic applications.
Please contact a technical service representative for more information.

1-3671 Viking Way,
Richmond, BC. Canada V6V2J5
T e l : 6 0 4 - 2 4 7 - 2 4 1 6
F a x : 6 0 4 - 2 4 7 - 2 4 1 4
w w w . a b m G o o d . c o m

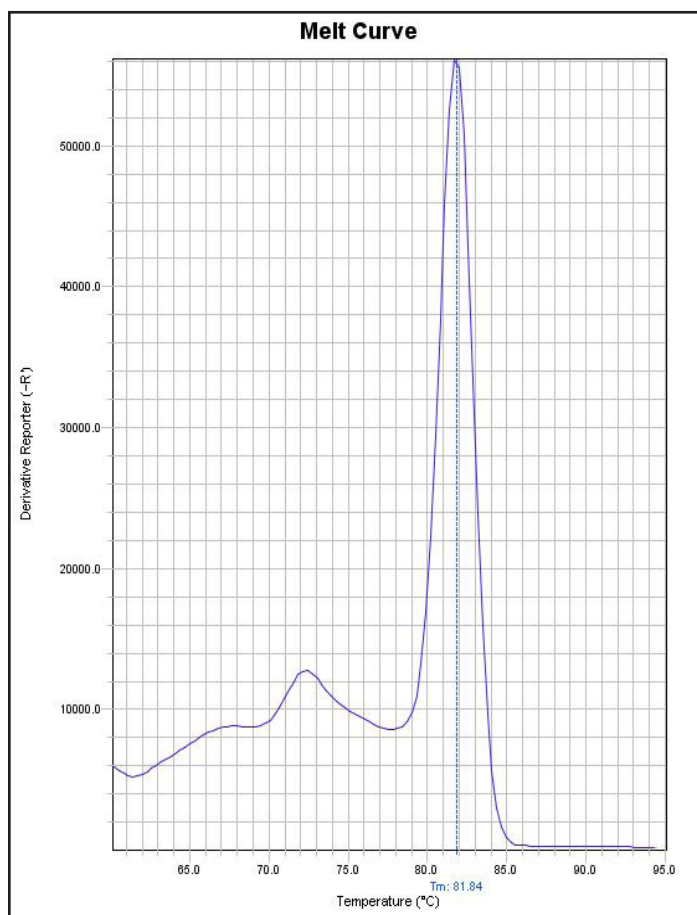
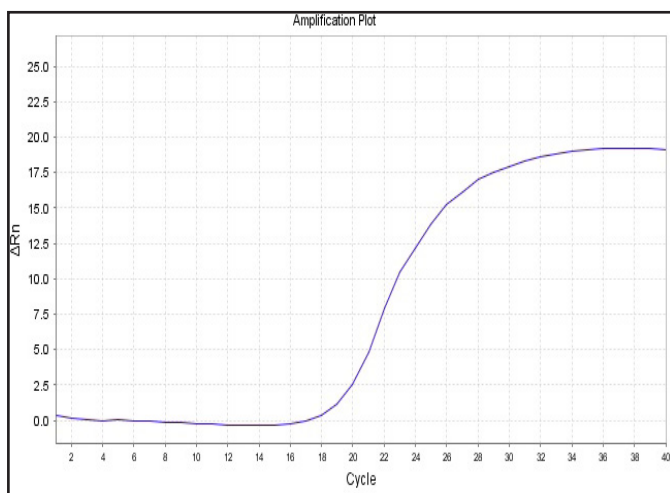
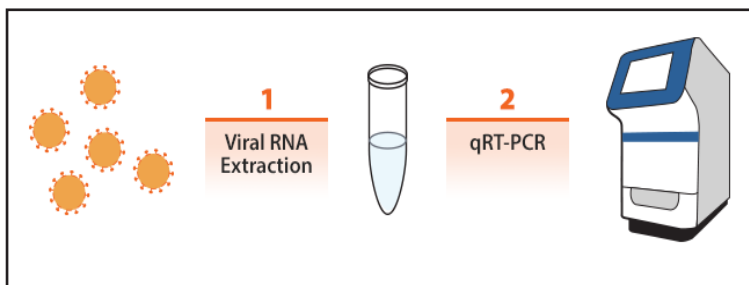
Lentivirus qRT-PCR titer Report

Cat No. G256

Lenti-SV40T Lentivirus

(10/26/2015)

Viral RNA was extracted from lentivirus and cDNA was generated from RT. The viral RNA samples and the lentiviral RNA STD1 and STD2 are subjected to qRT-PCR to determine threshold cycle (Ct) values. Real-time PCR was processed using lentivirus specific primers. With Ct values, the titers of lentivirus were determined by our lenti-titer calculator.



Block Type	48well
Chemistry	SYBR_GREEN
Experiment Run End Time	10/26/2015 13:20
Instrument Type	ABI Step one
Passive Reference	ROX

Sample Name	Lenti-SV40T Lentivirus	STD1	STD2
Ct Value	19.85	15.73	19.28

Titer of Lenti-SV40T Lentivirus =

$$\left[5 \times 10^7 / 2^{3(Ct_x - Ct_1) / (Ct_2 - Ct_1)} \right] = 4.47 \times 10^6 \text{ IU/ml}$$

Ctx: Ct value of sample, Ct1: Ct value of STD1, Ct2: Ct value of STD2