



Certificate of Analysis

Product Description

Product Name CMV Promoter Nanog Lentivirus
Cat Number G325
Lot Number AT7948
Quantity 1 x 200 µl
Viral Titer 2.10 x 10⁷ IU/ml
QC Evaluation Cell Line 293T Cells (Cat no. LV010)

Specifications

	Test Method	Minimum	Results
Viral Titer	qRT-PCR	1.0 x 10 ⁷ IU/ml	2.10 x 10 ⁷ IU/ml
Sterility Test	Direct Culture	***	Not detected

This product is for research use only and is not intended for therapeutic or diagnostic applications.
Please contact a technical service representative for more information.

No. 8, 13520 Crestwood Place
Richmond BC, Canada V6V2G2
T e l : 6 0 4 - 2 4 7 - 2 4 1 6
F a x : 6 0 4 - 2 4 7 - 2 4 1 4
w w w . a b m G o o d . c o m

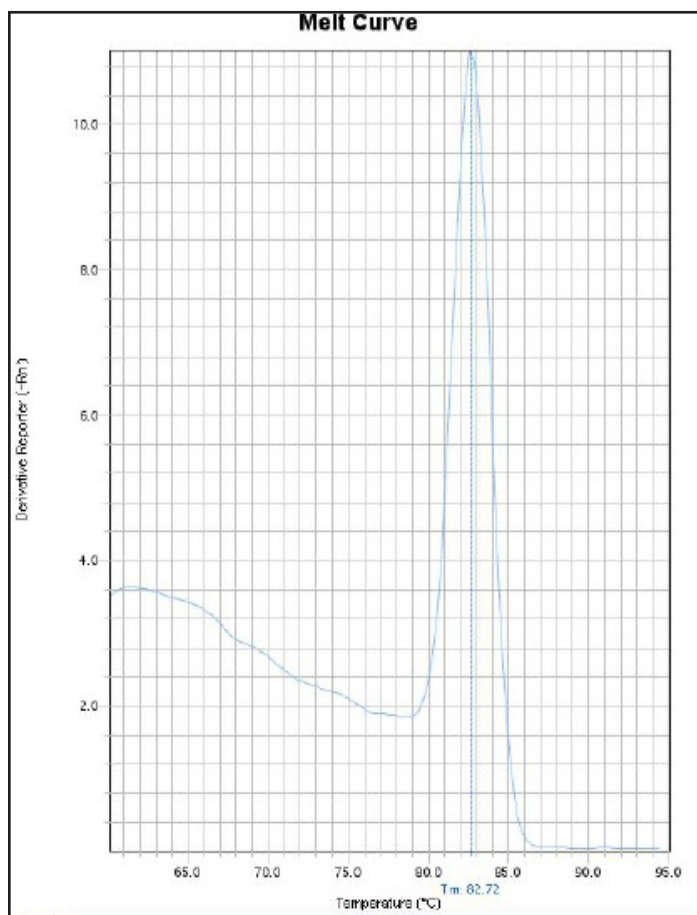
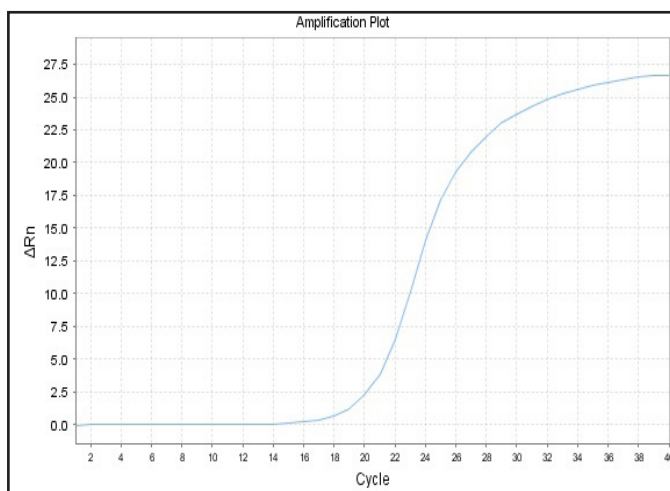
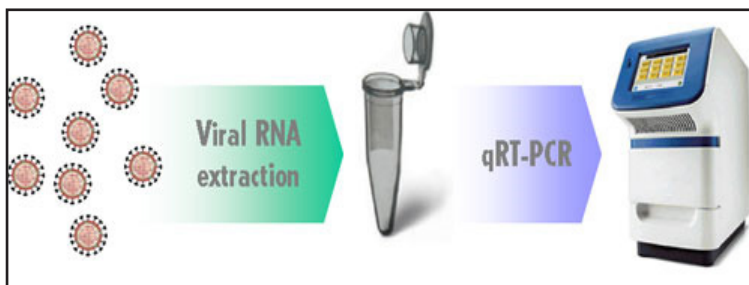
Lentivirus qRT-PCR titer Report

Cat No. G325

CMV Promoter Nanog Lentivirus

(03/24/2014)

Viral RNA was extracted from lentivirus and cDNA was generated from RT. The viral RNA samples (diluted 10 fold) and the lentiviral RNA STD1 and STD2 are subjected to qRT-PCR to determine threshold cycle (Ct) values. Real-time PCR was processed using lentivirus specific primers. With Ct values, the titers of lentivirus were determined by our lenti-titer calculator.



Block Type	48well
Chemistry	SYBR_GREEN
Experiment Run End Time	03/24/2014 1:26
Instrument Type	ABI Step one
Passive Reference	ROX

Sample Name	CMV Promoter Nanog Lentivirus	STD1	STD2
Ct Value	20.60	15.71	18.92

$$\text{Titer of CMV Promoter Nanog Lentivirus} = [5 \times 10^7 / 2^{3(Ct_x - Ct_1) / (Ct_2 - Ct_1)}] \times 10 = 2.10 \times 10^7 \text{ IU/ml}$$

Ctx: Ct value of sample, Ct1: Ct value of STD1, Ct2: Ct value of STD2

(Note: the titer equation was multiplied by 10 to account for the dilution of the lentivirus sample)