

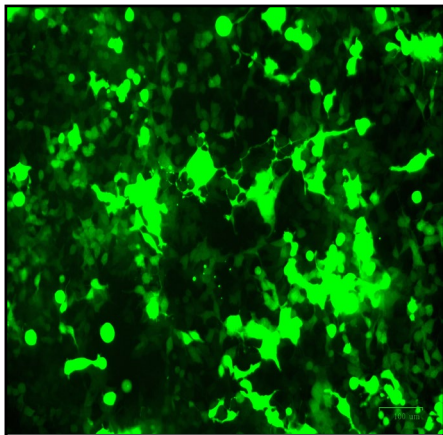
Certificate of Analysis

Product Description

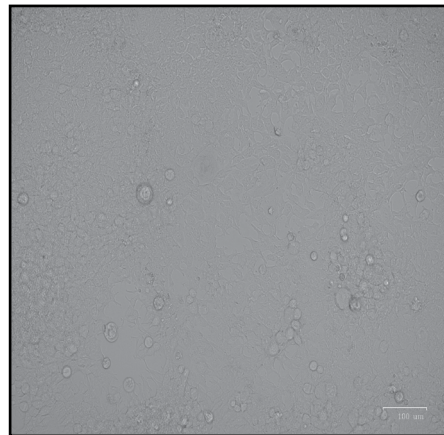
| | |
|-------------------------|---------------------------------|
| Product Name | Lenti-III-mir-GFP Control Virus |
| Cat Number | m002 |
| Lot Number | KL8150 |
| Quantity | 2 x 50 µl |
| Fluorescence Tag | GFP |
| Viral Titer | 5.34 x 10 ⁸ IU/ml |
| QC Evaluation Cell Line | 293T Cells (Cat no. LV010) |

Specifications

| | Test Method | Minimum | Results |
|---------------------|-------------------------|-----------------------------|------------------------------|
| Viral Titer | qRT-PCR | 1.0 x 10 ⁷ IU/ml | 5.34 x 10 ⁸ IU/ml |
| Transduction Signal | Fluorescence Evaluation | *** | Positive |
| Sterility Test | Direct Culture | *** | Not detected |



Fluorescent Tag: GFP



Brightfield Image

Transduction Duration: 72 Hours

MOI: 10.7

Multiplicity of Infection (MOI) Calculation Method:

$$\text{MOI} = \frac{\text{Product Titer (IU/ml)} \times \text{Virus Volume (ml)}}{\text{Total Cell Number}}$$

This product is for research use only and is not intended for therapeutic or diagnostic applications.
Please contact a technical service representative for more information.

1-3671 Viking Way,
Richmond, BC, Canada V6V2J5
Tel: 604-247-2416
Fax: 604-247-2414
www.abmGood.com

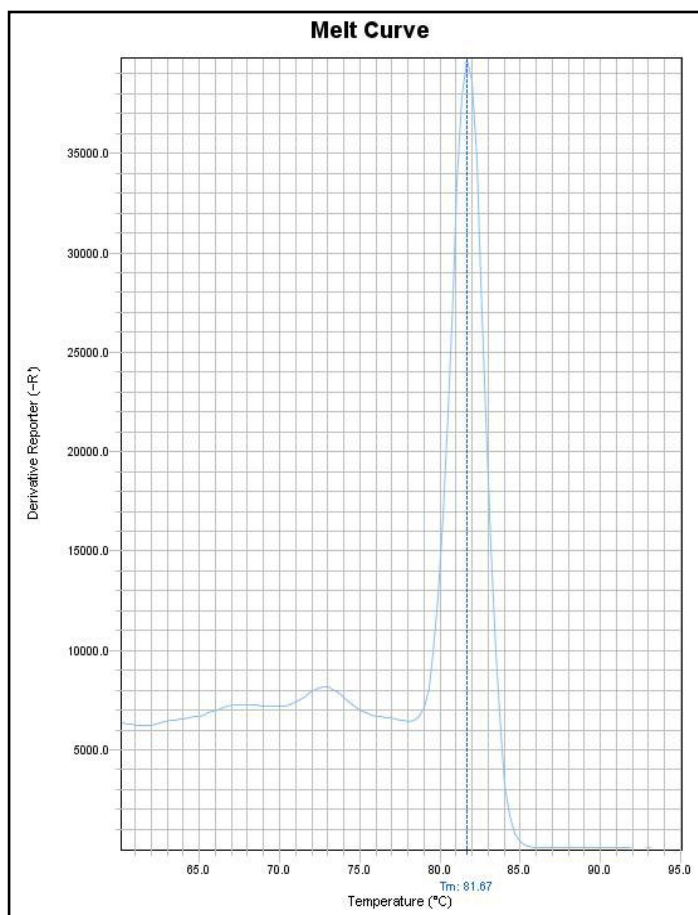
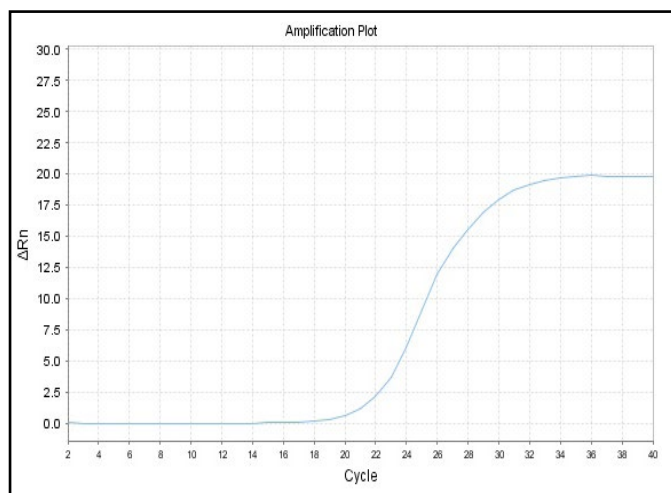
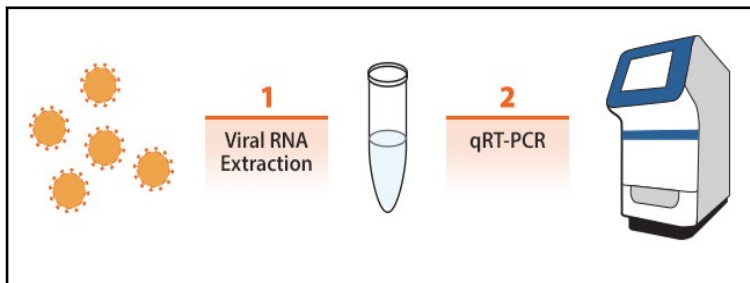
Lentivirus qRT-PCR Titer Report

Cat No. m002

Lenti-III-mir-GFP Control Virus

(05/25/2016)

Viral RNA was extracted from lentivirus and cDNA was generated from RT. The viral RNA samples (diluted 100 folds) and the lentiviral RNA STD1 and STD2 are subjected to qRT-PCR to determine threshold cycle (Ct) values. Real-time PCR was processed using lentivirus specific primers. With Ct values, the titers of lentivirus were determined by our lenti-titer calculator.



| | |
|--------------------------------|------------------|
| Block Type | 48well |
| Chemistry | SYBR_GREEN |
| Experiment Run End Time | 05/24/2016 13:20 |
| Instrument Type | ABI Step one |
| Passive Reference | ROX |

| Sample Name | Lenti-III-mir-GFP Control Virus | STD1 | STD2 |
|----------------------|---------------------------------|-------|-------|
| C _T Value | 20.21 | 16.94 | 19.98 |

Titer of **Lenti-III-mir-GFP Control Virus** =

$$\left[5 \times 10^7 / 2^{3(C_{Tx} - C_{t1}) / (C_{t2} - C_{t1})} \right] \times 100 = 5.34 \times 10^8 \text{ IU/ml}$$

C_{tx}: Ct value of sample, C_{t1}: Ct value of STD1, C_{t2}: Ct value of STD2.

(Note: the titer equation was multiplied by 100 to account for the dilution of the lentivirus sample)