

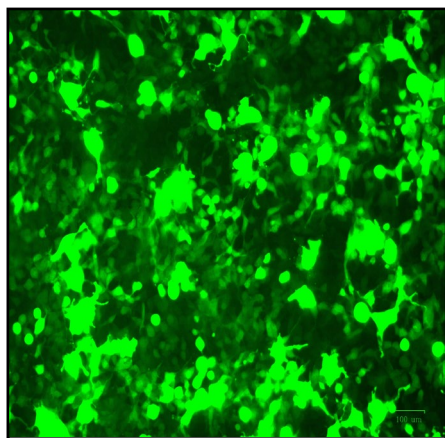
## Certificate of Analysis

### Product Description

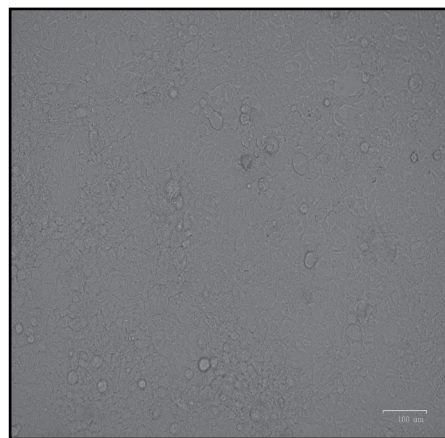
Product Name	Lenti-III-mir-Off Control Virus
Cat Number	m008
Lot Number	KL8150
Quantity	2 x 50 µl
Fluorescence Tag	GFP
Viral Titer	3.51 x 10 <sup>9</sup> IU/ml
QC Evaluation Cell Line	293T Cells (Cat no. LV010)

### Specifications

	Test Method	Minimum	Results
Viral Titer	qRT-PCR	1.0 x 10 <sup>7</sup> IU/ml	3.51 x 10 <sup>9</sup> IU/ml
Transduction Signal	Fluorescence Evaluation	***	Positive
Sterility Test	Direct Culture	***	Not detected



Fluorescent Tag: GFP



Brightfield Image

Transduction Duration: 72 Hours

MOI: 70.2

Multiplicity of Infection (MOI) Calculation Method:

$$\text{MOI} = \frac{\text{Product Titer (IU/ml)} \times \text{Virus Volume (ml)}}{\text{Total Cell Number}}$$

This product is for research use only and is not intended for therapeutic or diagnostic applications.  
Please contact a technical service representative for more information.

1-3671 Viking Way,  
Richmond, BC, Canada V6V2J5  
Tel: 604-247-2416  
Fax: 604-247-2414  
www.abmGood.com

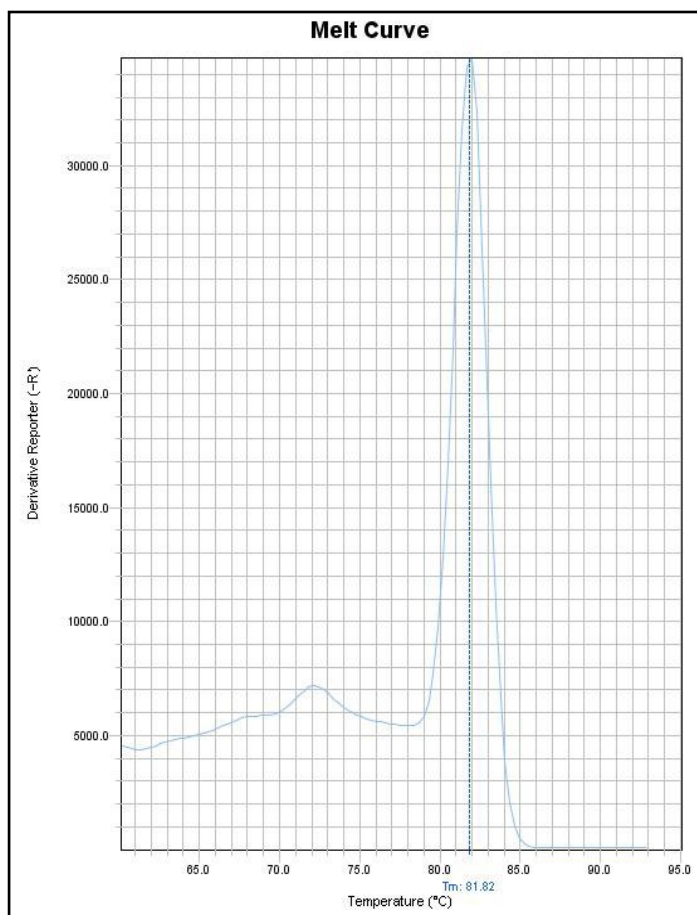
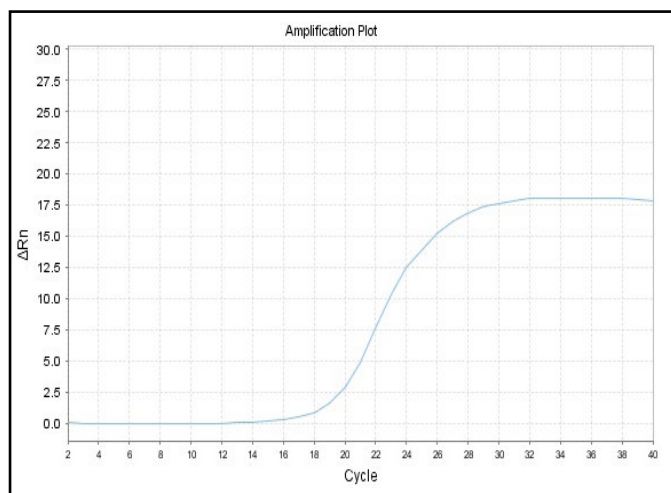
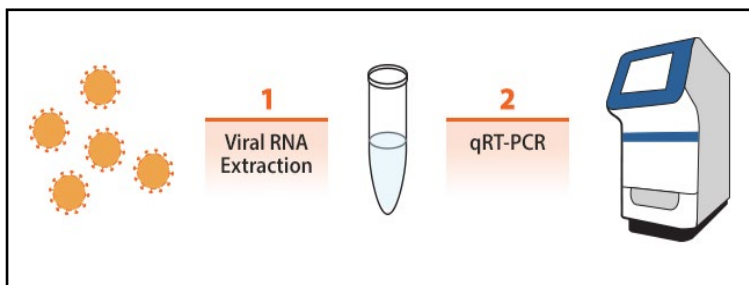
# Lentivirus qRT-PCR Titer Report

Cat No. m008

Lenti-III-mir-Off Control Virus

(05/25/2016)

Viral RNA was extracted from lentivirus and cDNA was generated from RT. The viral RNA samples (diluted 100 folds) and the lentiviral RNA STD1 and STD2 are subjected to qRT-PCR to determine threshold cycle (Ct) values. Real-time PCR was processed using lentivirus specific primers. With Ct values, the titers of lentivirus were determined by our lenti-titer calculator.



<b>Block Type</b>	48well
<b>Chemistry</b>	SYBR_GREEN
<b>Experiment Run End Time</b>	05/24/2016 13:20
<b>Instrument Type</b>	ABI Step one
<b>Passive Reference</b>	ROX

Sample Name	Lenti-III-mir-GFP Control Virus	STD1	STD2
C <sub>T</sub> Value	19.29	18.78	21.78

Titer of Lenti-III-mir-Off Control Virus =  $[5 \times 10^7 / 2^{3(C_{Tx} - C_{t1}) / (C_{t2} - C_{t1})}] \times 100 = 3.51 \times 10^9 \text{ IU/ml}$

C<sub>tx</sub>: Ct value of sample, C<sub>t1</sub>: Ct value of STD1, C<sub>t2</sub>: Ct value of STD2.

(Note: the titer equation was multiplied by 100 to account for the dilution of the lentivirus sample)