

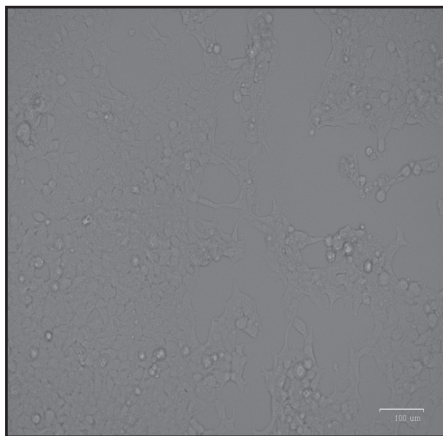
## Certificate of Analysis

### Product Description

Product Name	Lenti-EF1a-Blank Lentivirus
Cat Number	LVP688
Lot Number	KH8152
Quantity	1 x 200 µl
Viral Titer	5.40 x 10 <sup>9</sup> IU/ml
QC Evaluation Cell Line	293T Cells (Cat no. LV010)

### Specifications

	Test Method	Minimum	Results
Viral Titer	qRT-PCR	1.0 x 10 <sup>7</sup> IU/ml	5.40 x 10 <sup>9</sup> IU/ml
Sterility Test	Direct Culture	***	Not detected



Brightfield Image

Transduction Duration: 72 Hours

MOI: 24.0

Multiplicity of Infection (MOI) Calculation Method:

$$\text{MOI} = \frac{\text{Product Titer (IU/ml)} \times \text{Virus Volume (ml)}}{\text{Total Cell Number}}$$

This product is for research use only and is not intended for therapeutic or diagnostic applications.  
Please contact a technical service representative for more information.

1-3671 Viking Way,  
Richmond, BC, Canada V6V2J5  
T e l : 6 0 4 - 2 4 7 - 2 4 1 6  
F a x : 6 0 4 - 2 4 7 - 2 4 1 4  
w w w . a b m G o o d . c o m

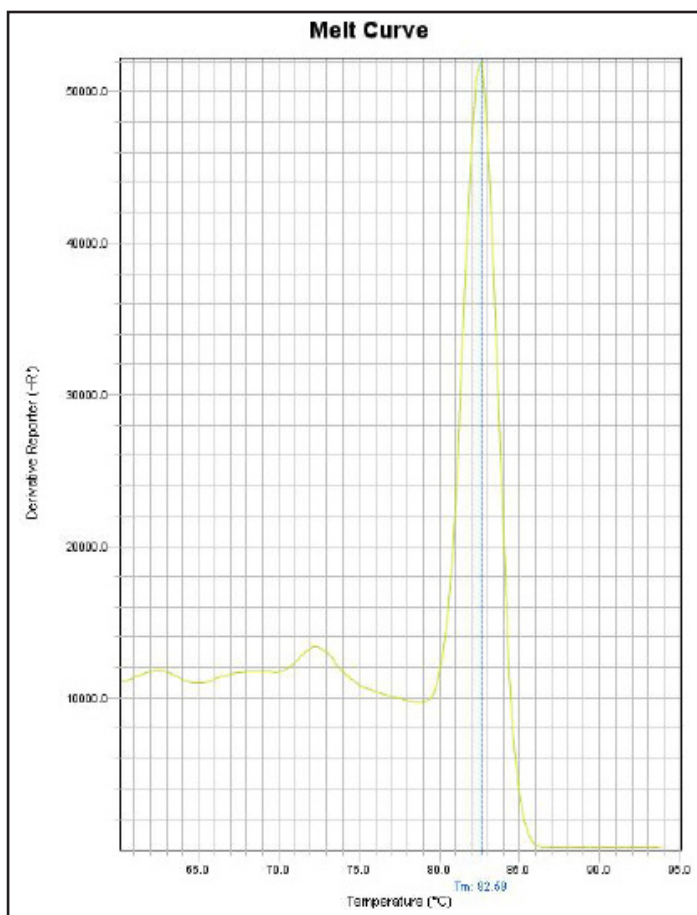
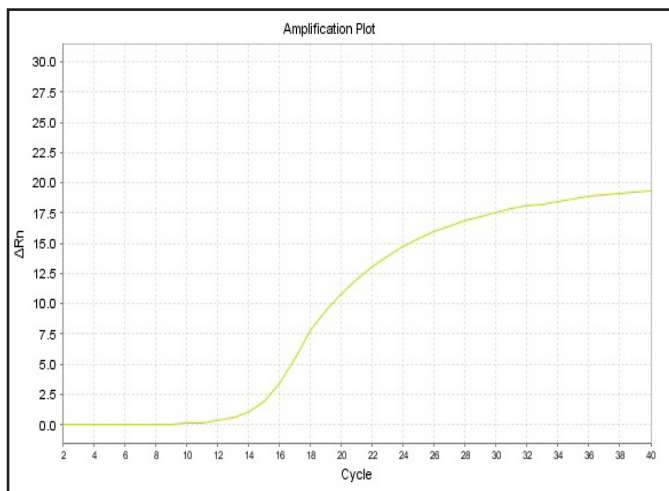
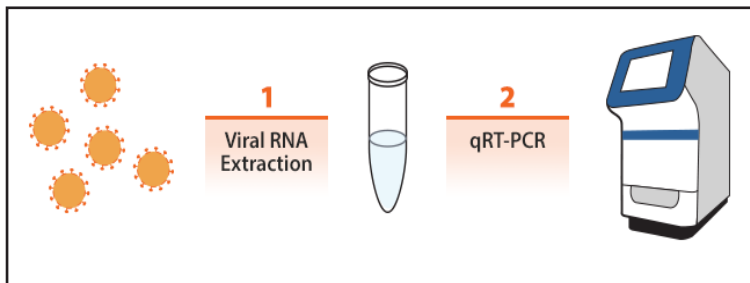
# Lentivirus qRT-PCR Titer Report

Cat No. LVP688

Lenti-EF1a-Blank Lentivirus

( 07/18/2016 )

Viral RNA was extracted from lentivirus and cDNA was generated from RT. The viral RNA samples (diluted 100 folds) and the lentiviral RNA STD1 and STD2 are subjected to qRT-PCR to determine threshold cycle (Ct) values. Real-time PCR was processed using lentivirus specific primers. With Ct values, the titers of lentivirus were determined by our lenti-titer calculator.



Block Type	48well
Chemistry	SYBR_GREEN
Experiment Run End Time	07/18/2016 13:20
Instrument Type	ABI Step one
Passive Reference	ROX

Sample Name	Lenti-EF1a-Blank Lentivirus	STD1	STD2
Ct Value	14.82	14.92	17.59

Titer of Lenti-EF1a-Blank Lentivirus =

$$[5 \times 10^7 / 2^{3(Ct_x - Ct_1) / (Ct_2 - Ct_1)}] \times 100 = 5.40 \times 10^9 \text{ IU/ml}$$

Ctx: Ct value of sample, Ct1: Ct value of STD1, Ct2: Ct value of STD2.

(Note: the titer equation was multiplied by 100 to account for the dilution of the lentivirus sample)